

CHISON

CBit 10

Premium with Touch

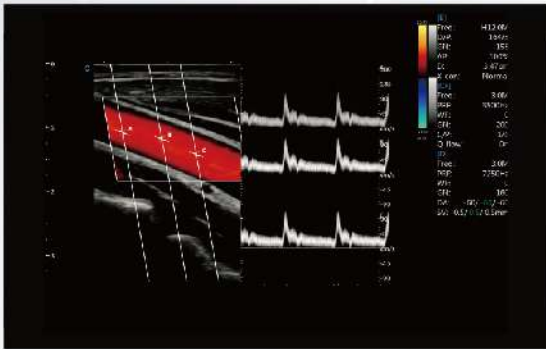


WWW.CHISON.COM

PREMIUM DESIGN

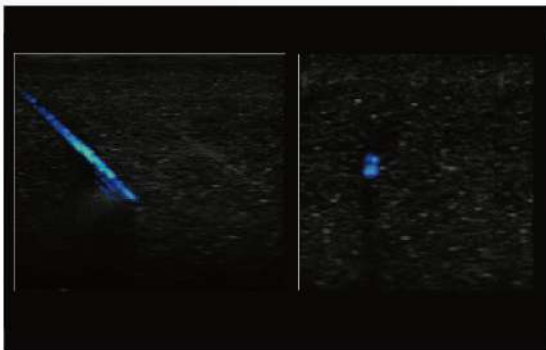


PREMIUM FEATURES



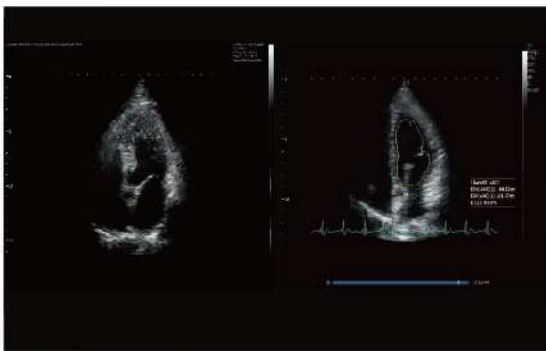
SonoPW

- The sample gate can be extended to 3 during PW mode.
- It can switch and active each sample gate to realize multi-point spectrum measurement in the same cardiac cycle at the same scanning plane .Support synchronous display of spectrum and speed value.



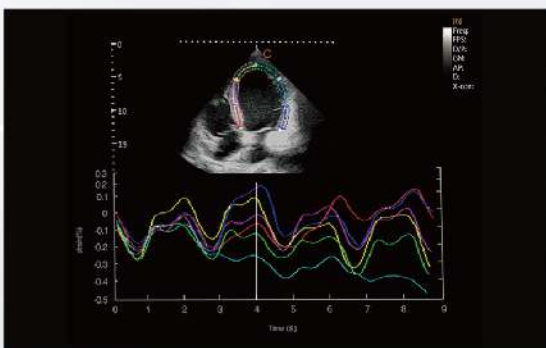
SonoNeedle

- SonoNeedle function is a cutting-edge ultrasound diagnostic puncture navigation system. In this mode, the needle path and needle tip position are dynamically displayed in color in real time.
- It can improve puncture efficiency and accuracy.



Auto EF

- Automatically recognize and envelope the endocardium accurately, and provide cardiac function measurement values (EDV,ESV,EF) synchronously.
- Greatly improve work efficiency.



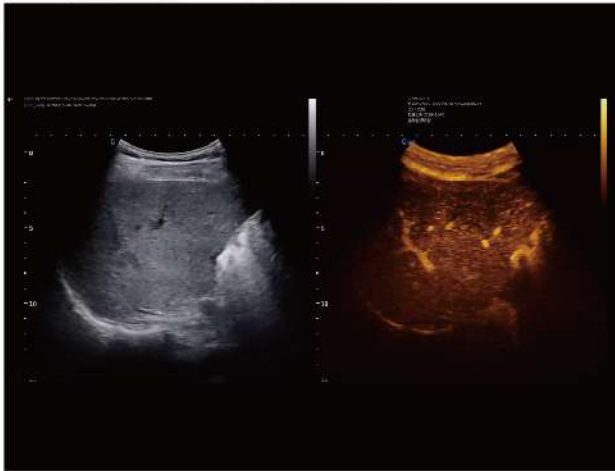
Strain and Strain Rate

- A new non-invasive method for assessment of myocardial function.
- Ability to differentiate between active and passive movement of myocardial segments, to quantify intraventricular dyssynchrony.
- To evaluate components of myocardial function.



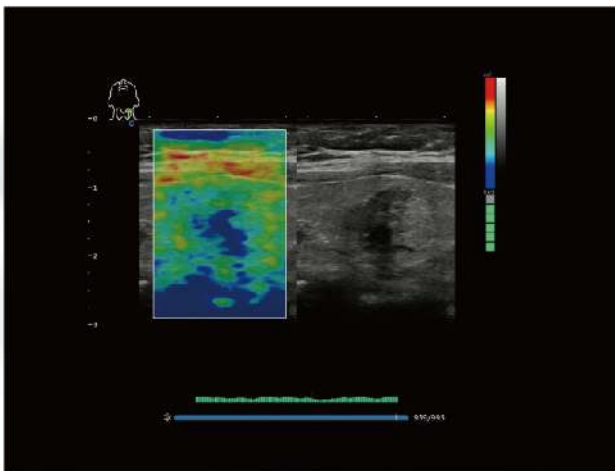
SonoContrast

- Been developed in order to visualize the micro-circulation in tissue, that is, the blood flow in imperceptible blood vessels.
- Potentially be used for improved diagnosis and therapy in several clinical situations.
- More sensitivity, better performance.



Elastography

- Display the elasticity of different tissues in different color.
- Provide more clinical information, especially for breast tumor, thyroid, liver and prostate, including linear, convex, transvaginal probe.
- Strain ratio measurement quantitatively gives the ratio between the average strain of the selected region and of the nearby normal tissue region.

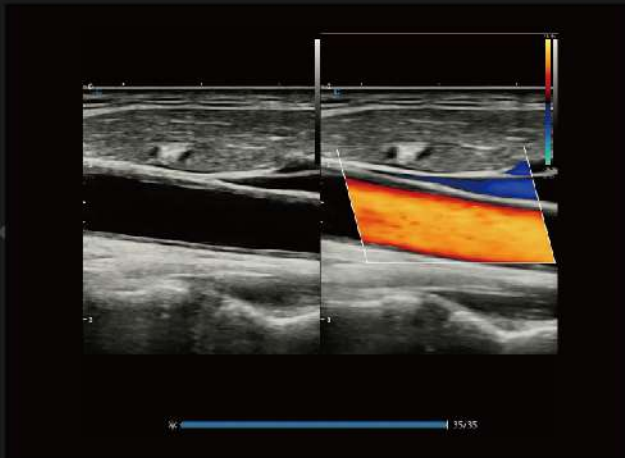


SonoCrystal

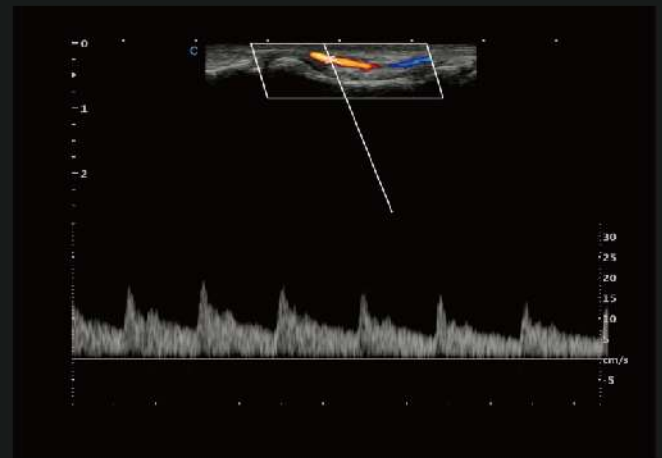
- Provide context and surface information.
- Allow an accurate understanding of patient anatomy.
- Easily differentiates between soft tissue and structure.



PREMIUM PERFORMANCE



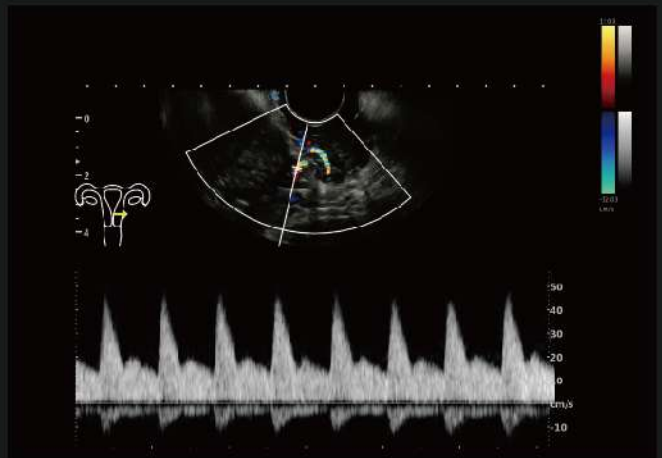
Carotid, B/BC Mode



Finger Vessel, PW Mode



Lymphadenopathy, C Mode



Uterus Vessel, PW Mode

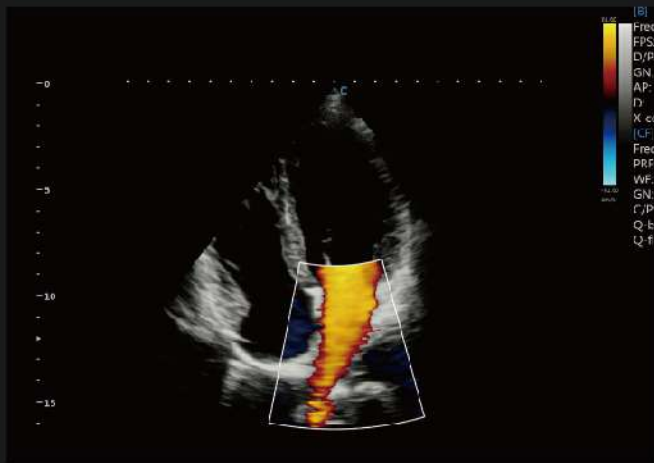


Fetus, B Mode



Fetal Face, Virtual HD

PREMIUM PERFORMANCE



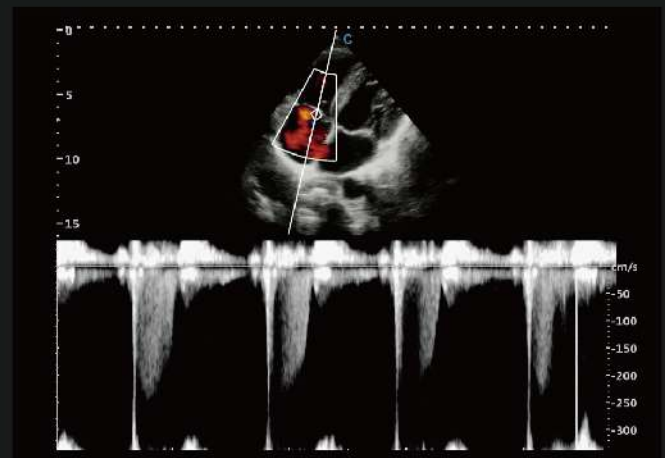
Cardiac, C Mode



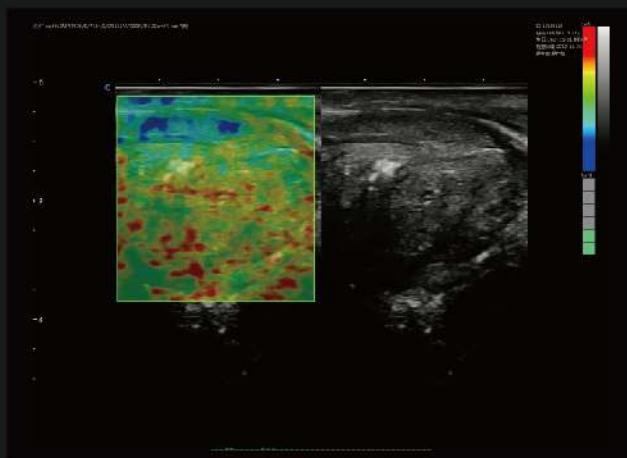
Cardiac, B Mode



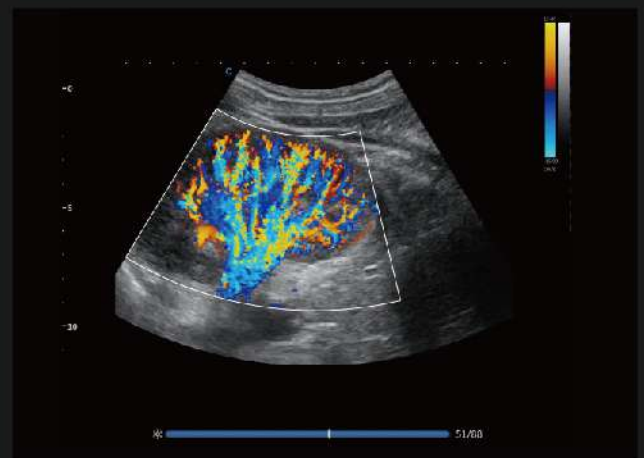
TV Regurgitation, C Mode



TV Regurgitation, CW Mode



Prostate, Elastography



Kidney, C Mode

PREMIUM VERSATILITY

Convex Transducer



D3C20L



D6C15L



D3C60L

Linear Transducer



D7L40L



D12L40L



M8L40L



D8L50L



M8L60L

Transvaginal Transducer



D6C12L



D7C10L

Transrectal Transducer



D7BC8



D7L40L-REC

Phased Array Transducer



D3P64L



D5P64L



D3P64LS

Special Transducer



T5P64L



D2D16L



D10L30L

Volume Transducer



V6C10L



V4C40L



CHISON
Value Beyond Imaging

———— **CHISON Medical Technologies Co., Ltd.** ————

Sales & Service Contact Address: No.3, Changjiang South Road, Xinwu District, Wuxi, Jiangsu, China 214028

TEL : 0086-510-85310937 **FAX :** 0086-510-85310726 **EMAIL :** export@chison.com.cn

We reserve the right to make changes to this catalogue without prior notice. All rights reserved.
Please contact our local dealer for the latest information.